








IDENTIFICATION BROCHURE



leaderproducts.com

Leaders in the field
since 1948





CONTENTS

	QUECLINK / LEADER STORY	3
	ELECTRONIC CATTLE IDENTIFICATION	4 - 6
	VISUAL CATTLE IDENTIFICATION TWO PIECE RANGE	7 - 12
	VISUAL CATTLE IDENTIFICATION ONE PIECE RANGE	13
	VISUAL CATTLE IDENTIFICATION FEEDLOT RANGE	14
	LASER MARKING - CATTLE	15
	CATTLE IDENTIFICATION APPLICATORS	16
	ACCESSORIES	17
	ELECTRONIC SHEEP/GOAT IDENTIFICATION	18 - 19
	VISUAL SHEEP/GOAT IDENTIFICATION	20
	LASER MARKING SHEEP/GOAT	21
	SHEEP/GOAT IDENTIFICATION APPLICATORS	22
	NOTES	23

HOW TO ORDER

STOCK CODES - HOW TO ORDER

Where specific colours are required for an ID Product you will need to apply the following Final Order Code method.

VISUAL CATTLE IDENTIFICATION - TWO PIECE RANGE											
	SUPER MAXI FEMALE										
	Marking Options: Laser or										
	Dimensions: 75.30 (w) x 119.00 (h) mm										
	Weight: 12.20 grams										
	GREY	BROWN	PURPLE	GREEN	PINK	ORANGE	YELLOW	WHITE	BLACK	RED	BLUE
	1	2	3	4	5	6	7	8	9	10	11
	Note: Price does not include Male Button										
											

Note: Excludes Male Tag and Marking (to match the pricebook)

A + B = FINAL ORDER CODE

2PSM + 6 = **2PSM6**

QUECLINK / LEADER STORY

On January 21st 2018 Leader Products formed a partnership with Queclink Wireless Solutions for the exclusive International Distribution rights outside of the Australian and New Zealand market.

Queclink Story

Queclink is a leading supplier of wireless machine-to-machine (M2M) devices and solutions. Queclink brings together an experienced team from both the wireless module industry and service operator side, for a complete understanding of the M2M business. They offer ready-made products for automotive tracking, fleet management, tracking & tracing, lone worker safety, mobile health care, remote monitoring and control of any assets, and wireless alarms to cover most popular applications via the Internet. Queclink have extensive experience with 2G & 3G, GPS, Bluetooth, WiFi, RFID & NFC and other wireless connectivity.

Leader Products Story

Leader Products Pty Ltd is a wholly Australian-owned company which has been specialising in the manufacture and distribution of livestock identification equipment since 1948.

In addition to their patented identification tags and applicators, Leader Products is also a wholesale distributor of an extensive range of animal husbandry supplies & equipment.

Market Leaders through Continuous Product Testing & Development

From the early beginnings with the patented “Leadertag” (plastic ear tags designed for the identification and tracking of sheep), Leader Products has continued to develop and enhance the quality of their products, resulting in the long-term establishment of the company as a prominent supplier within the agricultural industry.

Through the continuous development and improvement of their products’ quality, Leader Products has become an approved supplier of livestock identification devices for the National Livestock Identification Scheme (NLIS) in Australia and the National Animal Identification & Tracing (NAIT) scheme in New Zealand. The company is ISO 9001 certified in Australia and New Zealand.

Better Tags for Workers’ Safety and Healthier Livestock

Over time, Leader Products has expanded its range to include a variety of tags to suit most species of animals throughout the world. Continuous advancements in material technologies, laser marking capabilities and applicator design enable Leader Products to make improvements to their products, especially in areas such as tag retention and the reduction of material breakdown.

As a result, Leader Products’ identification tags now possess increased strength, flexibility and UV stability, which has improved the tags’ colour permanence and overall wear in tough environmental conditions.

Tag applicators have also continued to be redesigned to make tag application safer and more efficient for the users applying the tags, which in turn helps to reduce the risk of infection, stress and impact on the animal being tagged, from an animal health and welfare perspective.



ELECTRONIC CATTLE IDENTIFICATION



OFFICIAL EID

OFEIDC

The Official EID tag is designed to handle the toughest conditions with great retention and read distance.

The Official EID tags are applied using the Applicator Two Piece Tags.

ORANGE YELLOW WHITE
6 **7** **8**

Transponder Type: HDX 134.2kHz Inlay

Approvals: ICAR

Weight: 6.73 grams

Note: Includes Laser Marking. Official Button Male Not Included



OFFICIAL FLAG EID

OFFEIDC

The Official Flag EID tag is designed to handle the toughest conditions with great retention and read distance.

The Official Flag EID tags are applied using the Applicator Two Piece Tags.

GREY BROWN PURPLE GREEN PINK ORANGE YELLOW WHITE BLACK RED BLUE
1 **2** **3** **4** **5** **6** **7** **8** **9** **10** **11**

Transponder Type: HDX 134.2kHz Inlay

Approvals: ICAR

Weight: 14.00 grams

Note: Includes Laser Marking. Male Tag not included



ENVIRO

EENC

The Enviro tags are designed to handle the toughest conditions with great retention and read distance, these electronic identification cattle tags have been approved by NLIS, NAIT and ICAR.

The Enviro tags are applied using the Applicator Two Piece Tags.

ORANGE YELLOW WHITE
6 **7** **8**

Transponder Type: HDX 134.2kHz Inlay

Approvals: NLIS, NAIT, ICAR

Weight: 8.90 grams

Note: Includes Laser Marking. Official Button Male Not Included

ELECTRONIC CATTLE IDENTIFICATION



LEADERTRONIC

ELTC

The Leadertronic is designed to handle the toughest conditions with great retention and read distance, these electronic identification cattle tags have been approved by NLIS, NAIT and ICAR.

Leadertronic tags are applied using the Applicator Two Piece Tags.

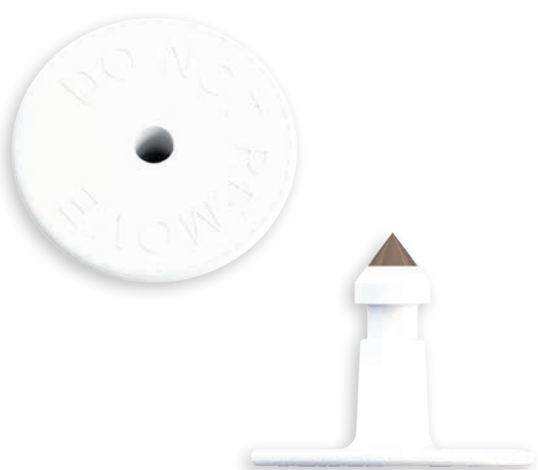


Transponder Type: HDX 134.2kHz 32mm Glass

Approvals: NLIS, NAIT, ICAR

Weight: 5.60 grams

Note: Includes Laser Marking. Official Button Male Not Included



OFFICIAL BUTTON MALE

OMB

The Official Button Male is manufactured using the highest quality material and UV stabilized to handle the toughest conditions.

The Official Button Male is only used in conjunction with Official EID, Official Flag EID, Enviro and Leadertronic tags.

They are applied using the Applicator Two Piece Tags.



Material: TPU (UV Stabilised)

Weight: 2.11 grams

Note: Used with Official EID, Enviro and Leadertronic, Official Flag EID.



HDX CATTLE BOLUS

EBLC

The HDX Cattle Bolus is an electronic identification device. Only one insertion is required to enable lifetime traceability with 100% retention rate (when inserted correctly).

Tested and approved safe for use in food and milk producing animals, the rumen bolus also acts as a deterrent against stock theft.

The HDX Cattle Bolus can be inserted using the Applicator HDX Cattle Bolus.

Transponder Type: HDX 134.2kHz 32mm Glass

Approvals: NLIS, ICAR

Weight: 61.20 grams

Note: Recommended to be purchased with visual tags

ELECTRONIC CATTLE IDENTIFICATION



EID REUSABLE

EIDCR

The EID Reusable is an electronic identification tag and is designed to handle the toughest conditions with great retention and read distance.

As the female portion of the tag can be reused from one animal to another, Button Males need to be replaced for each animal transfer and are available separately.

EID Reusable tags are applied using the Applicator Two Piece Tags.

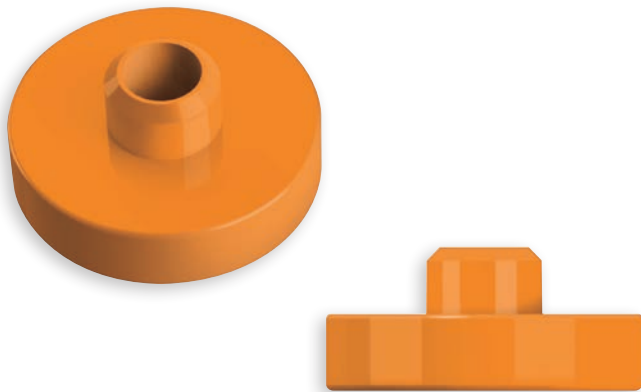
ORANGE YELLOW WHITE
6 **7** **8**

Transponder Type: HDX 134.2kHz Inlay

Approvals: ICAR

Weight: 8.60 grams

Note: Includes Laser Marking. Button Male Not Included



ENVIRO REUSABLE

EENCR

The Enviro Reusable is an electronic identification tag and is designed to handle the toughest conditions with great retention and read distance.

As the female portion of the tag can be reused from one animal to another, Button Males need to be replaced for each animal transfer and are available separately.

Enviro Reusable tags are applied using the Applicator Two Piece Tags.

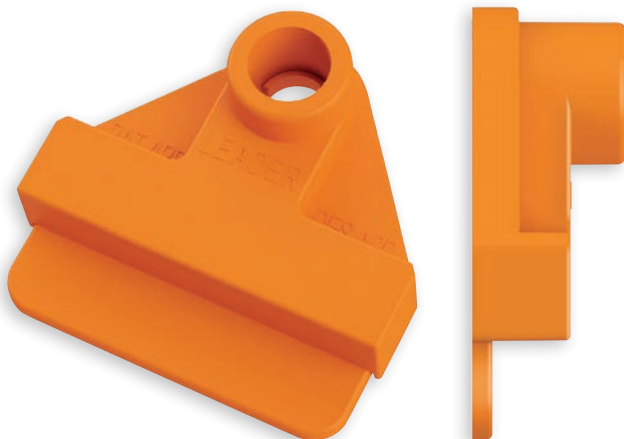
ORANGE YELLOW WHITE
6 **7** **8**

Transponder Type: HDX 134.2kHz Inlay

Approvals: None

Weight: 8.60 grams

Note: Includes Laser Marking. Button Male Not Included



LEADERTRONIC REUSABLE

ELTCR

The Leadertronic Reusable is an electronic identification tag and is designed to handle the toughest conditions with great retention and read distance.

As the female portion of the tag can be reused from one animal to another, Button Males need to be replaced for each animal transfer and are available separately.

Leadertronic Reusable tags are applied using the Applicator Two Piece Tags.

ORANGE YELLOW WHITE
6 **7** **8**

Transponder Type: HDX 134.2kHz 32mm Glass

Approvals: None

Weight: 5.33 grams

Note: Includes Laser Marking. Button Male Not Included

VISUAL CATTLE IDENTIFICATION TWO PIECE RANGE



SUPER MAXI FEMALE TAMPER PROOF

OF5

The Super Maxi Female Tamper Proof Tag is a two piece tamper proof tag designed for ease of application and the toughest conditions. They are available in 11 bright colors and designed to withstand the harshest of UV conditions to ensure sustainability and avoid fading.

It is the largest two piece tag in the visual tamper proof tag range, providing a large surface area for marking, giving excellent readability from long distances.

The Super Maxi Female Tamper Proof tags are applied using the Applicator Two Piece Tags.

GREY	BROWN	PURPLE	GREEN	PINK	ORANGE	YELLOW	WHITE	BLACK	RED	BLUE
1	2	3	4	5	6	7	8	9	10	11

Marking Options: Laser

Dimensions: 75.30 (w) x 120.90 (h) mm

Weight: 12.60 grams

Note: Excludes Male Tag and Marking



MAXI FEMALE TAMPER PROOF

OF4

The Maxi Female Tamper Proof Tag is a two piece tamper proof tag designed for ease of application and the toughest conditions. They are available in 11 bright colors and designed to withstand the harshest of UV conditions to ensure sustainability and avoid fading.

It is the largest two piece tag in the visual tamper proof tag range, providing a large surface area for marking, giving excellent readability from long distances.

The Maxi Female Tamper Proof tags are applied using the Applicator Two Piece Tags.

GREY	BROWN	PURPLE	GREEN	PINK	ORANGE	YELLOW	WHITE	BLACK	RED	BLUE
1	2	3	4	5	6	7	8	9	10	11

Marking Options: Laser

Dimensions: 74.00 (w) x 102.65 (h) mm

Weight: 10.70 grams

Note: Excludes Male Tag and Marking

VISUAL CATTLE IDENTIFICATION TWO PIECE RANGE



LARGE FEMALE TAMPER PROOF

OF3

The Large Female Tamper Proof Tag is a two piece tamper proof tag designed for ease of application and the toughest conditions. They are available in 11 bright colors and designed to withstand the harshest of UV conditions to ensure sustainability and avoid fading.

The Large Female Tamper Proof tags are applied using the Applicator Two Piece Tags.

GREY	BROWN	PURPLE	GREEN	PINK	ORANGE	YELLOW	WHITE	BLACK	RED	BLUE
1	2	3	4	5	6	7	8	9	10	11

Marking Options: Laser

Dimensions: 58.20 (w) x 72.60 (h) mm

Weight: 6.60 grams

Note: Excludes Male Tag and Marking



SMALL FEMALE TAMPER PROOF

OF2

The Small Female Tamper Proof Tag is a two piece tamper proof tag designed for ease of application and the toughest conditions. They are available in 11 bright colors and designed to withstand the harshest of UV conditions to ensure sustainability and avoid fading.

The Small Female Tamper Proof tags are applied using the Applicator Two Piece Tags.

GREY	BROWN	PURPLE	GREEN	PINK	ORANGE	YELLOW	WHITE	BLACK	RED	BLUE
1	2	3	4	5	6	7	8	9	10	11

Marking Options: Laser

Dimensions: 58.00 (w) x 57.00 (h) mm

Weight: 5.40 grams

Note: Excludes Male Tag and Marking



BUTTON FEMALE TAMPER PROOF

OF1

The Button Female Tamper Proof is a two piece tag, designed for ease of application and the toughest conditions. They are available in 11 bright colors and designed to withstand the harshest of UV conditions to ensure sustainability and avoid fading.

Button Female tags are applied using the Applicator Two Piece Tags.

GREY	BROWN	PURPLE	GREEN	PINK	ORANGE	YELLOW	WHITE	BLACK	RED	BLUE
1	2	3	4	5	6	7	8	9	10	11

Marking Options: Laser

Dimensions: 30.00 dia. x 14.00 (h) mm

Weight: 2.60 grams

Note: Excludes Male Tag and Marking

VISUAL CATTLE IDENTIFICATION TWO PIECE RANGE



SUPER MAXI FEMALE

2PSM

The Super Maxi Female is a two piece tag designed for ease of application and the toughest conditions. They are available in 11 bright colors and designed to withstand the harshest of UV conditions to ensure sustainability and avoid fading.

It is the largest two piece tag in the Leader range, providing a large surface area for marking, giving excellent readability from long distances.

The Super Maxi Female tags are applied using the Applicator Two Piece Tags.

GREY	BROWN	PURPLE	GREEN	PINK	ORANGE	YELLOW	WHITE	BLACK	RED	BLUE
1	2	3	4	5	6	7	8	9	10	11

Marking Options: Laser

Dimensions: 75.30 (w) x 119.60 (h) mm

Weight: 12.20 grams

Note: Excludes Male Tag and Marking



MAXI FEMALE

2PMX

The Maxi Female is a two piece tag designed for ease of application and the toughest conditions. They are available in 11 bright colors and designed to withstand the harshest of UV conditions to ensure sustainability and avoid fading.

The Maxi Female has a shorter neck than the Super Maxi Female, making it a popular tag for stud cattle and dairy applications, providing a large surface area for marking, and giving excellent readability from long distances.

Maxi Female tags are applied using the Applicator Two Piece Tags.

GREY	BROWN	PURPLE	GREEN	PINK	ORANGE	YELLOW	WHITE	BLACK	RED	BLUE
1	2	3	4	5	6	7	8	9	10	11

Marking Options: Laser

Dimensions: 74.00 (w) x 101.30 (h) mm

Weight: 11.90 grams

Note: Excludes Male Tag and Marking

VISUAL CATTLE IDENTIFICATION TWO PIECE RANGE



LARGE FEMALE

2PL

The Large Female is a two piece tag, designed for ease of application and the toughest conditions. They are available in 11 bright colors and designed to withstand the harshest of UV conditions to ensure sustainability and avoid fading.

Large Female tags are applied using the Applicator Two Piece Tags.

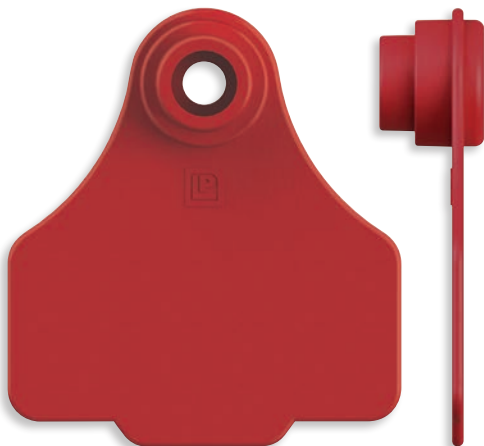


Marking Options: Laser

Dimensions: 58.20 (w) x 72.50 (h) mm

Weight: 6.90 grams

Note: Excludes Male Tag and Marking



SMALL FEMALE

2PS

The Small Female is a two piece tag, designed for ease of application and the toughest conditions. They are available in 11 bright colors and designed to withstand the harshest of UV conditions to ensure sustainability and avoid fading.

Small Female tags are applied using the Applicator Two Piece Tags.

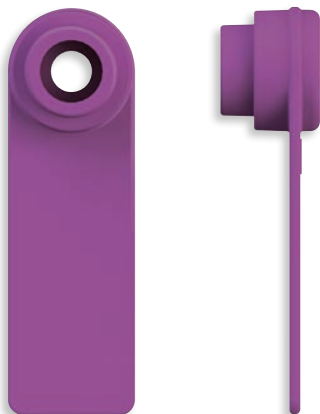


Marking Options: Laser

Dimensions: 47.80 (w) x 53.20 (h) mm

Weight: 4.77 grams

Note: Excludes Male Tag and Marking



MINI FEMALE

2PMI

The Mini Female is a two piece tag, designed for ease of application and the toughest conditions. They are available in 11 bright colors and designed to withstand the harshest of UV conditions to ensure sustainability and avoid fading.

Mini Female tags are applied using the Applicator Two Piece Tags.



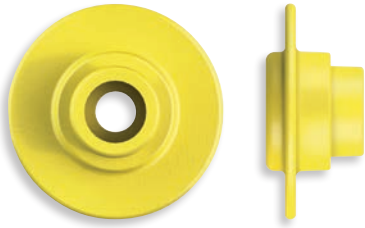
Marking Options: Laser

Dimensions: 16.30 (w) x 52.00 (h) mm

Weight: 2.10 grams

Note: Excludes Male Tag and Marking

VISUAL CATTLE IDENTIFICATION TWO PIECE RANGE



BUTTON FEMALE

FB

The Button Female is a two piece tag, designed for ease of application and the toughest conditions. They are available in 11 bright colors and designed to withstand the harshest of UV conditions to ensure sustainability and avoid fading.

Button Female tags are applied using the Applicator Two Piece Tags.

GREY	BROWN	PURPLE	GREEN	PINK	ORANGE	YELLOW	WHITE	BLACK	RED	BLUE
1	2	3	4	5	6	7	8	9	10	11

Marking Options: Laser

Dimensions: 28.00 dia. x 12.80 (h) mm

Weight: 2.60 grams

Note: Excludes Male Tag and Marking



MAXI MALE

MXM

The Maxi Male is a two piece tag, designed for ease of application and the toughest conditions. They are available in 11 bright colors and designed to withstand the harshest of UV conditions to ensure sustainability and avoid fading.

Suitable for all operations where visual identification is required from the rear of the animal.

Maxi Male tags are applied using the Applicator Two Piece Tags.

GREY	BROWN	PURPLE	GREEN	PINK	ORANGE	YELLOW	WHITE	BLACK	RED	BLUE
1	2	3	4	5	6	7	8	9	10	11

Marking Options: Laser

Dimensions: 74.00 (w) x 101.30 (h) mm

Weight: 10.64 grams

Note: Excludes Female Tag and Marking



LARGE MALE

ML

The Large Male is a two piece tag, designed for ease of application and the toughest conditions. They are available in 11 bright colors and designed to withstand the harshest of UV conditions to ensure sustainability and avoid fading.

Suitable for all operations where visual identification is required from the rear of the animal.

Large Male tags applied using the Applicator Two Piece Tags.

GREY	BROWN	PURPLE	GREEN	PINK	ORANGE	YELLOW	WHITE	BLACK	RED	BLUE
1	2	3	4	5	6	7	8	9	10	11

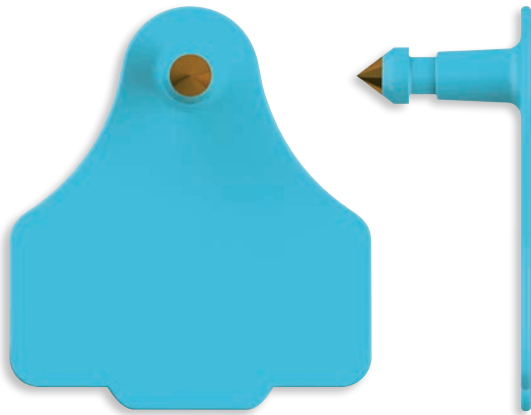
Marking Options: Laser

Dimensions: 58.20 (w) x 72.60 (h) mm

Weight: 6.40 grams

Note: Excludes Female Tag and Marking

VISUAL CATTLE IDENTIFICATION TWO PIECE RANGE



SMALL MALE

MS

The Small Male is a two piece tag designed for ease of application and the toughest conditions. They are available in 11 bright colors and designed to withstand the harshest of UV conditions to ensure sustainability and avoid fading.

Suitable for all operations where visual identification is required from the rear of the animal.

Small Male tags are applied using the Applicator Two Piece Tags.

GREY	BROWN	PURPLE	GREEN	PINK	ORANGE	YELLOW	WHITE	BLACK	RED	BLUE
1	2	3	4	5	6	7	8	9	10	11

Marking Options: Laser

Dimensions: 47.80 (w) x 53.20 (h) mm

Weight: 4.78 grams

Note: Excludes Female Tag and Marking



MINI MALE

MMI

The Mini Male is a two piece tag, designed for ease of application and the toughest conditions. They are available in 11 bright colors and designed to withstand the harshest of UV conditions to ensure sustainability and avoid fading.

Suitable for all operations where visual identification is required from the rear of the animal.

Mini Male tags are applied using the Applicator Two Piece Tags.

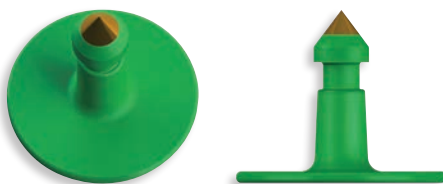
GREY	BROWN	PURPLE	GREEN	PINK	ORANGE	YELLOW	WHITE	BLACK	RED	BLUE
1	2	3	4	5	6	7	8	9	10	11

Marking Options: Laser

Dimensions: 18.50 (w) x 53.00 (h) mm

Weight: 2.40 grams

Note: Excludes Female Tag and Marking



BUTTON MALE

MB

The Button Male is a two piece tag, designed for ease of application and the toughest conditions. They are available in 11 bright colors and designed to withstand the harshest of UV conditions to ensure sustainability and avoid fading.

Button Male tags are applied using the Applicator Two Piece Tags.

GREY	BROWN	PURPLE	GREEN	PINK	ORANGE	YELLOW	WHITE	BLACK	RED	BLUE
1	2	3	4	5	6	7	8	9	10	11

Marking Options: Laser

Dimensions: 28.00 dia. x 23.10 (h) mm

Weight: 2.11 grams

Note: Excludes Female Tag and Marking

VISUAL CATTLE IDENTIFICATION ONE PIECE RANGE



COW TAG

CT

The Cow Tag is a self piercing one piece tag designed for ease of application. They are available in 11 bright colors and designed to withstand the harshest of UV conditions to ensure sustainability and avoid fading.

Cow Tags are applied using the Applicator One Piece.

GREY	BROWN	PURPLE	GREEN	PINK	ORANGE	YELLOW	WHITE	BLACK	RED	BLUE
1	2	3	4	5	6	7	8	9	10	11

Marking Options: Laser

Dimensions: 75.50 (w) x 114.00 (h) mm

Weight: 10.81 grams

Note: Self Piercing. Excludes Marking



CALF TAG

CAT

The Calf Tag is a self piercing one piece tag designed for ease of application. They are available in 11 bright colors and designed to withstand the harshest of UV conditions to ensure sustainability and avoid fading.

Calf Tags are applied using the Applicator One Piece.

GREY	BROWN	PURPLE	GREEN	PINK	ORANGE	YELLOW	WHITE	BLACK	RED	BLUE
1	2	3	4	5	6	7	8	9	10	11

Marking Options: Laser

Dimensions: 61.00 (w) x 100.00 (h) mm

Weight: 8.28 grams

Note: Self Piercing. Excludes Marking

VISUAL CATTLE IDENTIFICATION FEEDLOT RANGE



FEEDLOT TAG ONE PIECE

FTO

The Feedlot Tag One Piece is a self piercing tag designed for ease of application. They are available in 11 bright colors and designed to withstand the harshest of UV conditions to ensure sustainability and avoid fading. Designed to provide short term identification for feedlots.

Feedlot Tag One Piece are applied using the Applicator One Piece.

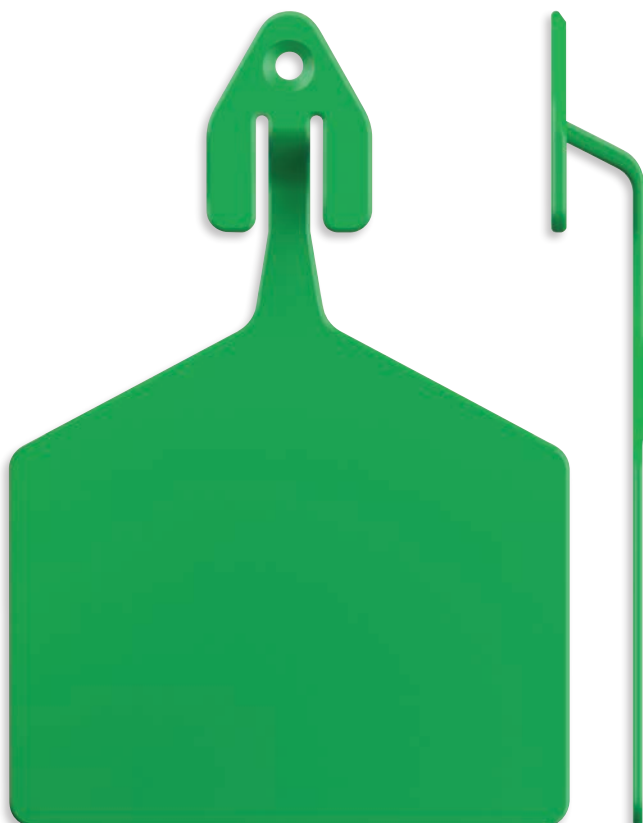
GREY	BROWN	PURPLE	GREEN	PINK	ORANGE	YELLOW	WHITE	BLACK	RED	BLUE
1	2	3	4	5	6	7	8	9	10	11

Marking Options: Laser

Dimensions: 76.00 (w) x 116.50 (h) mm

Weight: 9.91 grams

Note: Minimum Order 100. Excludes Marking



FEEDLOT TAG

FT

The Feedlot Tag is a one piece tag designed for ease of application and the toughest conditions. They are available in 11 bright colors and designed to withstand the harshest of UV conditions to ensure sustainability and avoid fading.

Feedlot Tags are applied using the Applicator Feedlot.

GREY	BROWN	PURPLE	GREEN	PINK	ORANGE	YELLOW	WHITE	BLACK	RED	BLUE
1	2	3	4	5	6	7	8	9	10	11

Marking Options: Laser

Dimensions: 75.80 (w) x 110.37 (h) mm

Weight: 7.02 grams

Note: Minimum Order 100. Excludes Marking

LASER MARKING - CATTLE



1 LINE LASER MARKING

1L

The Leader laser marking system makes for permanent marking with the laser penetrating the tag and becoming part of the tag. Laser marking enables more flexibility in marking options.

Marking Options:

One line of characters, number of characters varies due to the tag and print size.



2 LINE LASER MARKING

2L

The Leader laser marking system makes for permanent marking with the laser penetrating the tag and becoming part of the tag. Laser marking enables more flexibility in marking options.

Marking Options:

Two lines of characters, number of characters varies due to the tag and print size.



3 LINE LASER MARKING

3L

The Leader laser marking system makes for permanent marking with the laser penetrating the tag and becoming part of the tag. Laser marking enables more flexibility in marking options.

Marking Options:

Three lines of characters, number of characters varies due to the tag and print size.



CUSTOMISED LASER MARKING

CUSTOMISED LASER MARKING

CL

CUSTOMISED LASER SET-UP

CLSU

The Leader laser marking system makes for permanent marking, with the laser penetrating and becoming part of the tag. Laser marking enables more flexibility in marking options.

Customized laser tags may be ordered with a virtually unlimited number of marking options, including logos, brands, numbers and bar codes.

Marking Options: Brands, Logos, Bar Codes

Format Required: .eps or vector

Note: Customised Laser Marking price is per tag. Customised Laser Set-Up price is per template

CATTLE IDENTIFICATION APPLICATORS



APPLICATOR TWO PIECE TAGS

APPTP

The Applicator Two Piece Tags is made from solid diecast material and MIM technology for the insertion pin to ensure against breakage or bending. Designed specifically for all weather conditions.

Applicable Tags: Official EID, Official Flag EID, Enviro, Leadertronic and Visual Two Piece Tag Range.

Weight: 380.00 grams



APPLICATOR ONE PIECE TAG

APP ONE P

The Applicator One Piece is made from super lightweight plastic with a hardened steel pin to ensure against breakage or bending. Designed specifically for all weather conditions.

Applicable Tags: One Piece Tag Range

Weight: 170.00 grams



APPLICATOR FEEDLOT

FTAPP

The Applicator Feedlot is designed from engineering grade plastic and MIM technology for the insertion pin to ensure the longevity and sharpness at all times. Designed specifically for all weather conditions in the feedlot environment.

Applicable Tags: Feedlot Tag FT Range Only

Weight: 420.00 grams



APPLICATOR HDX CATTLE BOLUS

AABOL1000

The Applicator HDX Cattle Bolus is designed for easy use and features a Stainless Steel application tube for improved hygiene and longevity. Designed specifically to allow for precise delivery of the HDX Cattle Bolus into the rumen. Simply pull the trigger to deliver the bolus.

Applicable Device: HDX Cattle Bolus

Weight: 435.00 grams

ACCESSORIES



MARKING PEN (TAG) BLACK

MPEN1000

The Marking Pen has a broad tip and is quick-drying to assist in ensuring you get a good mark on your tags. Designed specifically to suit all weather conditions.

Available in black ink.

Weight: 25.00 grams

Applicable Tags: One Piece, Two Piece



MARKING PEN (TAG) WHITE

MPEN1001

The Marking Pen has a broad tip and is quick-drying to assist in ensuring you get a good mark on your tags. Designed specifically to suit all weather conditions.

Available in white ink.

Weight: 35.00 grams

Applicable Tags: One Piece, Two Piece

ELECTRONIC SHEEP/GOAT IDENTIFICATION



MULTITRONIC

EMTS

The Multitronic is an electronic identification one piece tag used for the effective identification of sheep and goats. The Multitronic tags are supplied in strips of 10.

They are available in 11 bright colors and designed to withstand the harshest of UV conditions to ensure sustainability and avoid fading.

Multitronic tags are applied using the Applicator Multi 3 in 1.

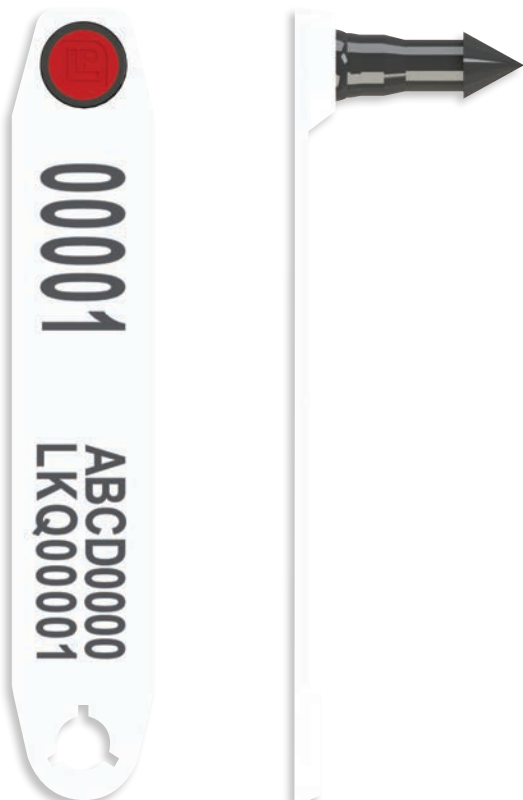
GREY	BROWN	PURPLE	GREEN	PINK	ORANGE	YELLOW	WHITE	BLACK	RED	BLUE
1	2	3	4	5	6	7	8	9	10	11

Transponder Type: HDX 134.2kHz 23mm Glass

Approvals: NLIS, ICAR

Weight: 2.98 grams

Note: Includes Laser Marking



MULTIPIN

EMPS

The Multipin is an electronic identification one piece tag used for the effective identification of sheep and goats. The Multipin tags are supplied in strips of 10. Consisting of a large print surface to allow for more options when laser marking.

They are available in 11 bright colors and designed to withstand the harshest of UV conditions to ensure sustainability and avoid fading.

Multipin tags are applied using the Applicator Multi 3 in 1.

GREY	BROWN	PURPLE	GREEN	PINK	ORANGE	YELLOW	WHITE	BLACK	RED	BLUE
1	2	3	4	5	6	7	8	9	10	11

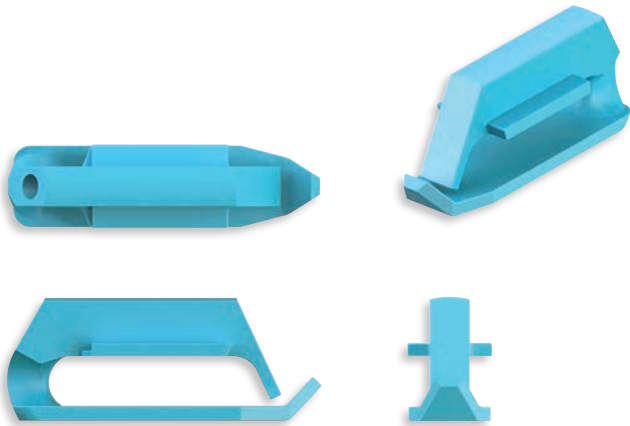
Transponder Type: HDX 134.2kHz E-Rod

Approvals: ICAR

Weight: 2.77 grams

Note: Includes Laser Marking

ELECTRONIC SHEEP/GOAT IDENTIFICATION



JUMBO EID

EJBS

The Jumbo EID is an electronic identification tag with proven retention in the field due to the anti snagging design.

They are available in 11 bright colors and designed to withstand the harshest of UV conditions to ensure sustainability and avoid fading.

Jumbo EID tags are applied with Applicator Aluminum Leadermatic.

GREY	BROWN	PURPLE	GREEN	PINK	ORANGE	YELLOW	WHITE	BLACK	RED	BLUE
1	2	3	4	5	6	7	8	9	10	11

Transponder Type: HDX 134.2kHz 23mm Glass

Approvals: None

Weight: 4.48 grams

Note: Includes Laser Marking, One Side Only



HDX SHEEP BOLUS

EBSL

The HDX Sheep Bolus is an electronic identification device which is inserted into the rumen of the animal for life.

HDX Sheep Boluses can be matched with any visual sheep tag.

Ideal as an identification device when fleece testing, auto drafting and for stock theft control.

HDX Sheep Bolus devices are inserted using the Applicator Sheep Bolus.

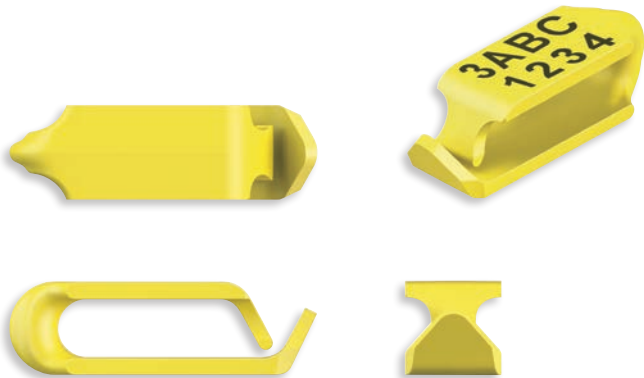
Transponder Type: HDX 134.2kHz 23mm Glass

Approvals: None

Weight: 22.60 grams

Note: Visual Tag options available separately

VISUAL SHEEP/GOAT IDENTIFICATION



LEADERTAG

LT

The Leadertag is used for long term application and better stock management. The tags come with strong arms and possess anti-snagging design. The shape of the product holds the tag in correct position at all times in the animals ear.

They are available in 11 bright colors and designed to withstand the harshest of UV conditions to ensure sustainability and avoid fading.

The Leadertags are applied using the Applicator Aluminum Leadermatic.

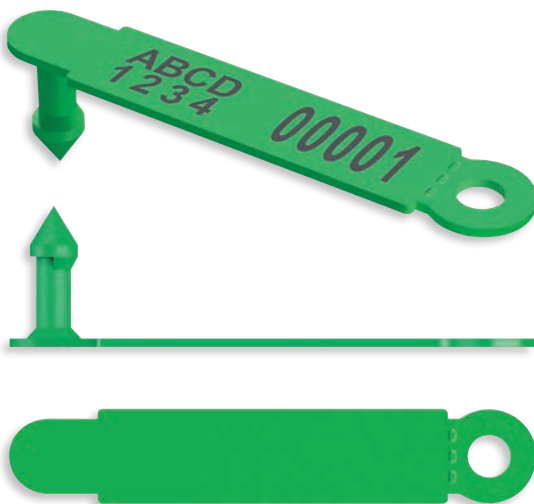


Approvals: NLIS

Dimensions: 12.70 (w) x 41.21 (l) x 12.60 (d) mm

Weight: 2.00 grams

Note: Excludes Laser Marking



MULTITAG

MT

The Multitag is used for the effective identification of sheep and goats and is supplied in strips of 10.

They are available in 11 bright colors and designed to withstand the harshest of UV conditions to ensure sustainability and avoid fading.

Multitags are applied using the Applicator Multi 3 in 1.

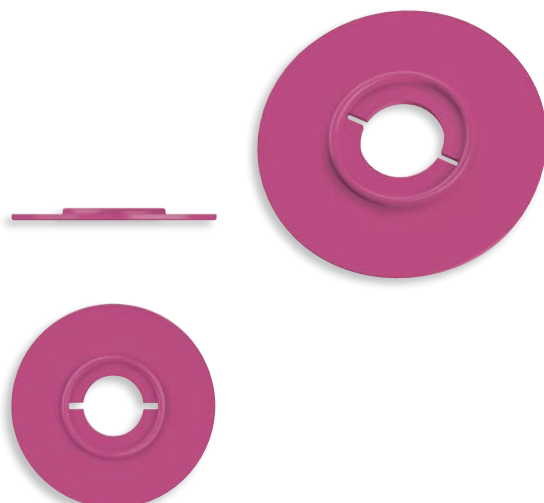


Approvals: NLIS

Dimensions: 13.50 (w) x 74.50 (l) mm

Weight: 1.76 grams

Note: Excludes Laser Marking



MICRON

MIC

The Micron tag is a low cost, simple plastic washer and is used to depict the micron color range chosen. This range of colored tags are simply pulled over existing Leadertags or added to self-piercing tags prior to application.

They are available in 11 bright colors and designed to withstand the harshest of UV conditions to ensure sustainability and avoid fading.



Marking Options: None

Dimensions: 14.70 dia x 1.85 (d) mm

Weight: 0.81 grams

Note: Minimum Order 100

LASER MARKING SHEEP



ONE SIDED LASER MARKING

OSL

The Leader laser marking system makes for permanent marking with the laser penetrating the tag and becoming part of the tag. Laser marking enables more flexibility in marking options. The tags are available to be marked on one side of the tag.

Marking Options:

Characters marked on one side, number of characters varies due to the tag and print size.



TWO SIDED LASER MARKING

TSL

The Leader laser marking system makes for permanent marking with the laser penetrating the tag and becoming part of the tag. Laser marking enables more flexibility in marking options. The tags are available to be marked on two sides of the tag.

Marking Options:

Characters marked on two sides, number of characters varies due to the tag and print size.

SHEEP/GOAT IDENTIFICATION APPLICATORS



APPLICATOR SHEEP BOLUS

APPBOL1001

The Applicator Sheep Bolus is designed for easy use and features a Stainless Steel application tube for improved hygiene and longevity. Designed specifically to allow for precise delivery of the HDX Sheep Bolus into the rumen of the animal. Simply pull the trigger to deliver the bolus.

Applicable Device: HDX Sheep Bolus
Weight: 420.00 grams

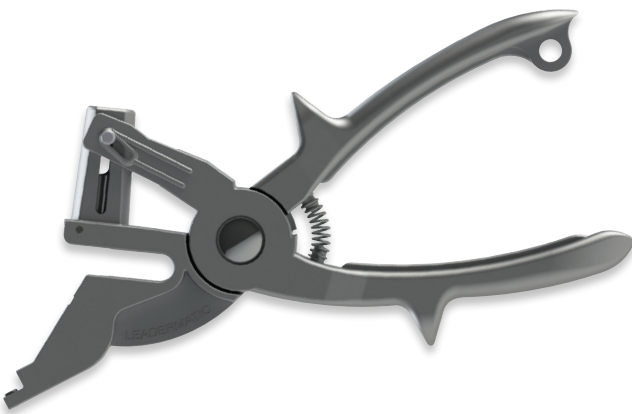


APPLICATOR MULTI 3 IN 1

APPMT

The Applicator Multi 3 in 1 is made from high grade stainless steel to ensure no rusting and designed with built in pushers to ensure the tags are positioned correctly every time.

Applicable Tags: Multitronic, Multipin, Multitag
Weight: 700.00 grams



APPLICATOR ALUMINIUM LEADERMATIC

LTAA

The Applicator Aluminum Leadermatic punches a hole in the ear and inserts the tag in one easy action. Designed specifically for all weather conditions.

Applicable Tags: Jumbo EID, Leadertag
Weight: 315.00 grams



Queclink Wireless Solutions Co., Ltd

Floor 3, Huaxin Business Center,
No.717 Yishan Road, Xuhui District,
Shanghai, China, 200233

P +86 21 5445 0292
E ipsales@queclink.com
W www.queclink.com

CONTACT YOUR REPRESENTATIVE BELOW:



leaderproducts.com